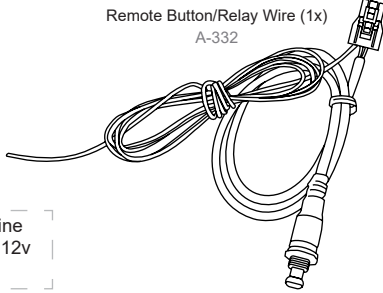
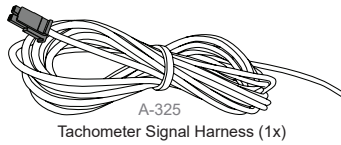




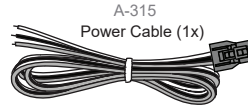
GPS Antenna (1x)  
A-140



Remote Button/Relay Wire (1x)  
A-332



A-325  
Tachometer Signal Harness (1x)



A-315  
Power Cable (1x)

**ATTENTION:** 5 amp In-Line Fuse recommended for +12v Keyed Ignition.

**ATTENTION:** Power Draw = 0.2 amp.

## INSTALLATION

- 1 DISCONNECT your vehicle's negative (-) battery cable.
- 2 CONNECT the gauge wiring.
- 3 MOUNT your gauge to the panel using the spin lock ring.
- 4 RECONNECT your vehicle's negative (-) battery cable.

When mounting, ensure that wire connections in back of tachometer are protected from wet conditions. Front of tachometer is water resistant.

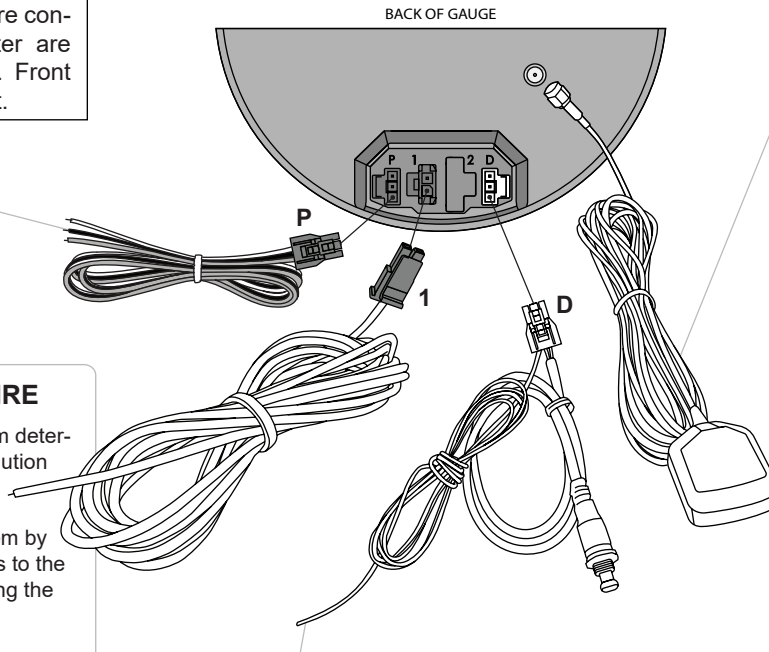
WHITE: +12v Dash Lighting (Gauge lighting)  
BLACK: Ground  
RED: +12v Accessory Power (Main Gauge Power)

### TACHOMETER SIGNAL WIRE

The vehicle's type of ignition system determines the correct Pulses Per Revolution (PPR).

Identify your vehicle's ignition system by comparing the total # of spark plugs to the total # of engine coils, or by checking the ECU.

Use the table on page 3 to determine the ignition type and PPR.



GREEN WITH STRIPE: Relay (Figure 2: Wiring Schematic).

### GPS CONNECTION

The playback tachometer will auto-save your satellite position, allowing the GPS to acquire signal within 10 seconds after power up. When powered off for more than 4 hours, GPS signal will take 30-60 seconds to acquire due to satellite movement.

The GPS Antenna is waterproof and magnetic, and can receive signal through all thin materials except for metal. Optimal mounting locations are vehicle roof or top of dashboard.

- 1 CONNECT GPS Antenna securely to threaded post on back of Tachometer.
- 2 MOUNT GPS Antenna with maximum exposure to the sky, with the magnetic side facing the ground.

**⚠ WARNING: HIGH VOLTAGE CAN BE PRESENT ON IGNITION WIRES.** Ensure engine is OFF before connecting yellow tachometer signal wire to a coil.

DO NOT SPLICE tachometer signal wire directly into a spark plug wire. This will damage the tachometer.

Connecting signal wire to the wrong coil will NOT damage the tachometer.

Wear eye protection during installation.

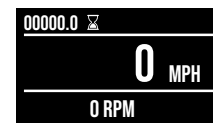
### DETAIL MONITOR VIEW

Press the remote button to toggle between the following screens:

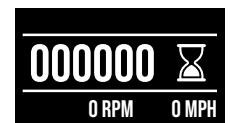
Current RPM



Current Speed



Hour Meter





## MENU BUTTON: SETUP

- 1 PRESS MENU button to open main menu.
- 2 PRESS and hold PEAK button to enter Option Settings.
- 3 TOGGLE through the following options with MENU and PEAK buttons:

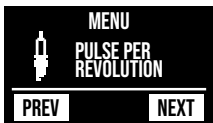
### Playback Speed



1:1 plays back in real time.  
1:3 plays back in 1/3 time.

- 1 PRESS AND HOLD PEAK button to edit settings.
- 2 HIGHLIGHT desired playback speed with MENU and PEAK buttons.
- 3 After a small delay, the highlighted selection will save.

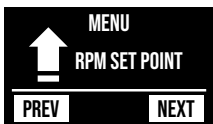
### Pulses per Revolution (PPR)



See Figure 1 (page 3) to determine the correct PPR setting for your application.

- 1 PRESS AND HOLD PEAK button to edit settings.
- 2 HIGHLIGHT desired PPR setting with MENU and PEAK buttons.
- 3 After a small delay, the highlighted selection will save.

### RPM (Trigger) Set Point



Sets RPM where relay wire will activate relay or other connected device. Below RPM set point, trigger wire will be open float. When RPM passes set point, trigger wire will pull to ground.

- 1 PRESS AND HOLD PEAK button to edit settings.
- 2 MOVE pointer to desired RPM setting with MENU and PEAK buttons.
- 3 After a small delay, the selected RPM setting will save.

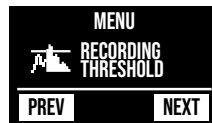
### Recording Time



1 minute = 100 samples/second.  
5 minutes = 20 samples/second.  
10 minutes = 10 samples/second.  
20 minutes = 5 samples/second.

- 1 PRESS AND HOLD PEAK button to edit settings.
- 2 HIGHLIGHT desired length of recording with MENU and PEAK buttons.
- 3 After a small delay, the highlighted selection will save.

### Recording Threshold (RPM)



Recording will automatically start when RPM passes set threshold after button press. Set at 0 to start recording right at button press.  
LED blink: waiting to reach set RPM.  
LED solid: actively recording.

- 1 PRESS AND HOLD PEAK button to edit settings.
- 2 MOVE pointer to desired RPM setting with MENU and PEAK buttons.
- 3 After a small delay, the selected RPM setting will save.

### Help



Displays contact info and firmware version. For assistance, please contact us:  
support@speedhut.com  
801-221-1460 (9a-4p MST)  
FAQ - Speedhut.com/faq.i

- 1 PRESS AND HOLD PEAK button to view data.

### Restore Defaults



For troubleshooting and technical support, the factory default settings can be restored.

- 1 PRESS AND HOLD PEAK button to access settings.
- 2 PRESS AND HOLD YES button to restore factory settings. (Press and hold NO to exit the menu.)



### PLAYBACK MENU



REW: Hold to rewind. Press for frame-by-frame.  
PLAY/PAUSE: Play/pause run.  
END: Exit run. Run stores until next recording.  
FF: Hold to fast-forward. Press for frame-by-frame.

- 1 PRESS MENU button to open main menu.
- 2 PRESS AND HOLD MENU button to begin playback. Gauge will play run back at set playback speed (1:3 or 1:1).
- 3 TOGGLE through options with MENU and PEAK buttons.

### Recording a Run



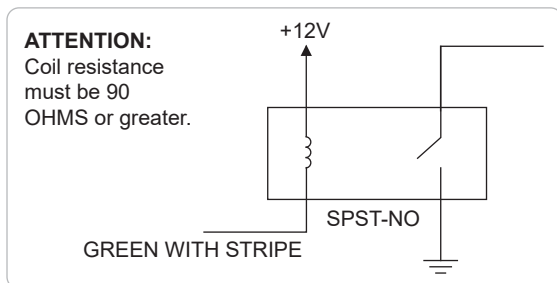
The playback tachometer can only store 1 run at a time. A run will remain saved until a new run is recorded.  
The tachometer will record for the set amount of time (1, 5, 10, or 20 minutes).

- 1 PRESS AND HOLD remote button or PEAK button for 2 seconds.
- 2 Recording will start and LED will light up solid blue.
- 3 If threshold RPM is set up, the blue LED will flash when the button is pressed, and will solidify when threshold RPM is reached and recording starts.

Figure 1. Determining PPR

	Distributor-Based (Single-Coil)	Wasted-Spark (Distributorless) (Coil Packs)	Coil - On - Plug (COP)	OEM ECU Connection	Aftermarket ECU Connection
12 Cyl (4-Stroke)	6 PPR	1 PPR	0.5 PPR	6 PPR	6 PPR
10 Cyl (4-Stroke)	5 PPR	1 PPR	0.5 PPR	5 PPR	5 PPR
8 Cyl (4-Stroke)	4 PPR	1 PPR	0.5 PPR	4 PPR	4 PPR
6 Cyl (4-Stroke)	3 PPR	1 PPR	0.5 PPR	3 PPR	3 PPR
4 Cyl (4-Stroke)	2 PPR	1 PPR	0.5 PPR	2 PPR	2 PPR
2 Cyl (4-Stroke)	1 PPR	1 PPR	0.5 PPR	1 PPR	1 PPR
1 Cyl (4-Stroke)	0.5 PPR	1 PPR	0.5 PPR	0.5 PPR	0.5 PPR
3 Cyl (2-Stroke)	3 PPR	3 or 6 PPR	1 PPR	3 or 6 PPR	3 or 6 PPR
2 Cyl (2-Stroke)	2 PPR	2 PPR	1 PPR	2 PPR	2 PPR
1 Cyl (2-Stroke)	1 PPR	2 PPR	1 PPR	1 PPR	1 PPR

Figure 2. Relay Wiring Schematic



#### LIFETIME WARRANTY

We take pride in the products we make and offer a Lifetime Warranty on gauge electronics and a 5-year warranty on hardware for every gauge, tachometer and shift light purchased since Jan 1, 2006. Every SPEEDHUT product is built for a lifetime of service, and we warrant to the person who originally purchased the product that all SPEEDHUT products will be free from defects in workmanship and materials for their applicable warranty period. If a defect occurs during the warranty period as the result of the product's intended use, we will repair or replace the defective product or part, to our discretion. The warranty does not cover defects caused by third-party modifications, repairs or replacement parts. Any holes, scratches, normal wear and tear, and the natural breakdown of colors and materials over extended time and use are not warranted.

#### CONTACT US

Support@Speedhut.com  
801-221-1460 (9a-4p MST)  
FAQ - Speedhut.com/faq.i  
www.Speedhut.com